



15412 Grumbles Lane

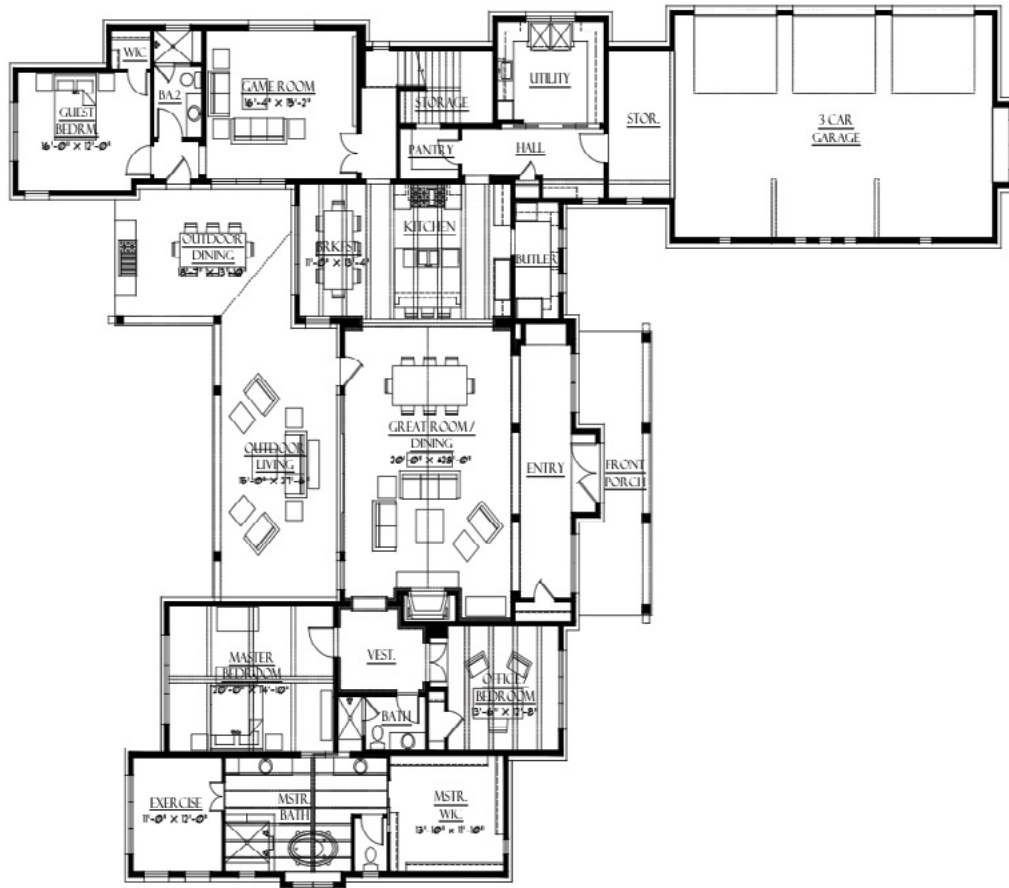
Contemporary Farmhouse Style Home
by Geschke Group in Signal Hill Estates

4,684 s.f | 2 Stories | 4 Bedrooms | 4.5 Baths | 3 Car Garage

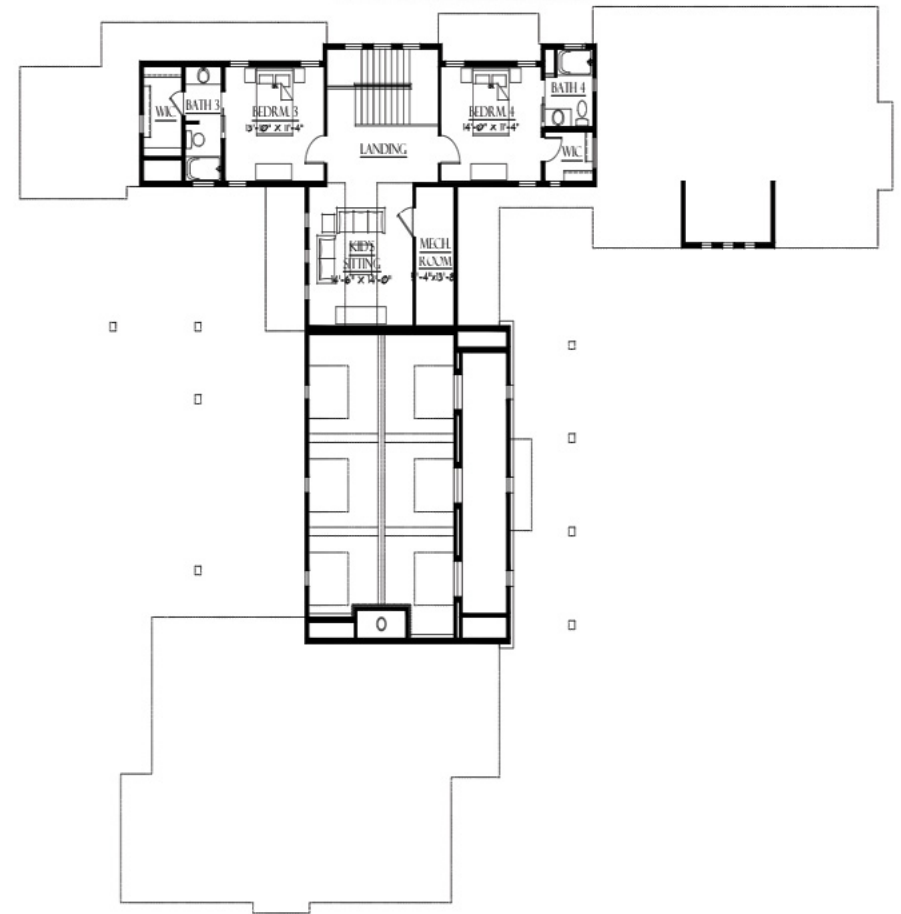
\$1,829,000 | Call Alan Fudge: (512) 729-6500



15412 Grumbles Lane - Contemporary Farmhouse in Signal Hill Estates



Main Floor



Upper Floor

A contemporary take on the popular farmhouse style is evident in this two-story offering by Geschke Group. The master suite is downstairs with an optional office or small bedroom close by and an exercise room right off the master bedroom. The oversized kitchen has a butler's pantry and a breakfast area that transitions directly to a covered outdoor dining area. Similarly, the great room connects to the outdoor living area. A guest bedroom and a game room dominate the other downstairs wing, along with the garage and several storage areas. Two more bedrooms and a kid's sitting room complete the upstairs area.

Features:

- Game Room
- Study
- Outdoor Living & Dining Areas
- Master & Guest Suites Down

For Sales Information, Call Alan Fudge: (512) 729-6500